

Using Skype



What is Skype?

- P2P Application
 - Peer to Peer
- Internet Telephony
 - Free Skype to Skype
 - Charge for Skype to Mobile/Landline
 - SkypeIn
 - Phone number to Skype
- Video
 - Add Video to IPT
 - Video Conferencing (discontinued)

Who is Skype?

- Home base in Estonia
- HQ in Luxembourg
- Acquired in September of 2005 by eBay for 2.6 Million

What you need

- Computer
 - “Always on” Internet
 - Faster the machine the better the video
- Audio
 - Microphone and Speakers
 - Headsets for clarity and privacy
 - Feedback
- Video
 - WebCam

Installation

 The Skype download should start within seconds. If it doesn't, you can [start the download again](#). You need Windows 2000, XP or Vista to run Skype.

1 Run the Skype Setup application

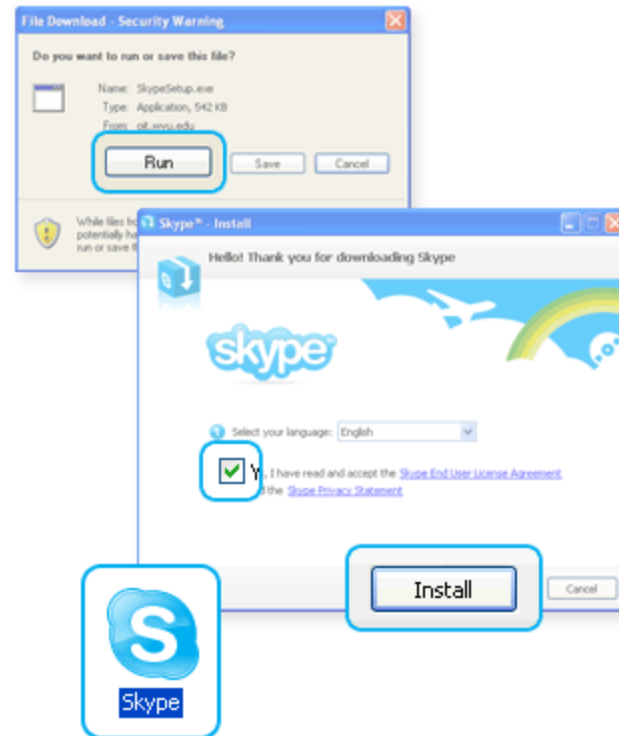
A window will open asking what you want to do with a file called **SkypeSetup.exe**. You might see a confirmation message, asking if you're sure you want to run this software. Click 'Run' again.

2 Follow the Setup Wizard

When the download has finished, the **Skype Setup Wizard** will appear and guide you through the rest of the installation.

3 Launch Skype

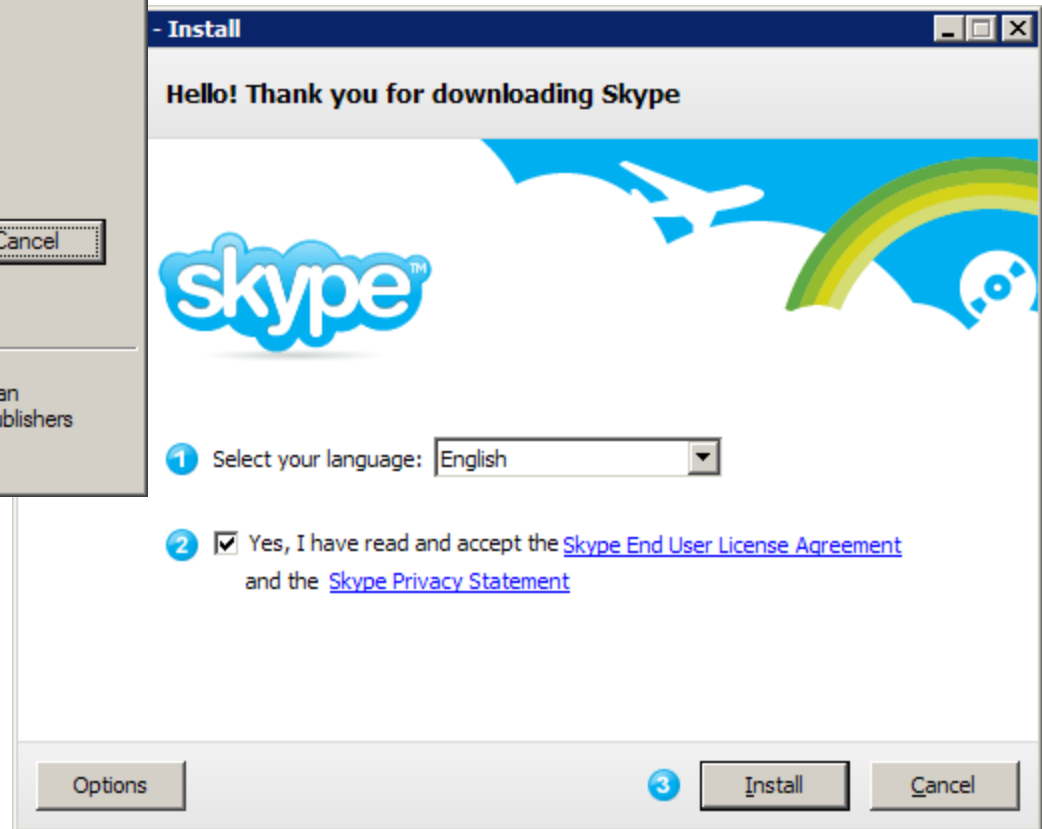
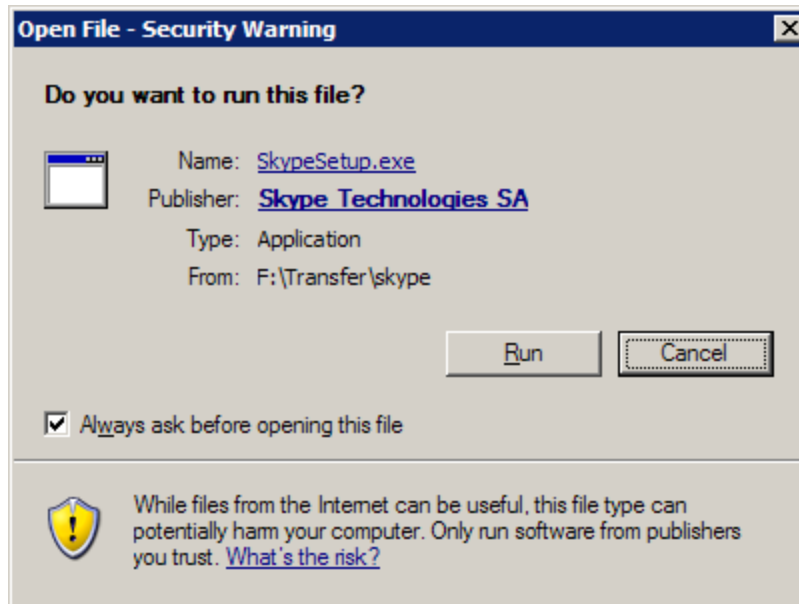
After the installation has finished, you can **open Skype** at any time by clicking the icon on your desktop or in your system tray.



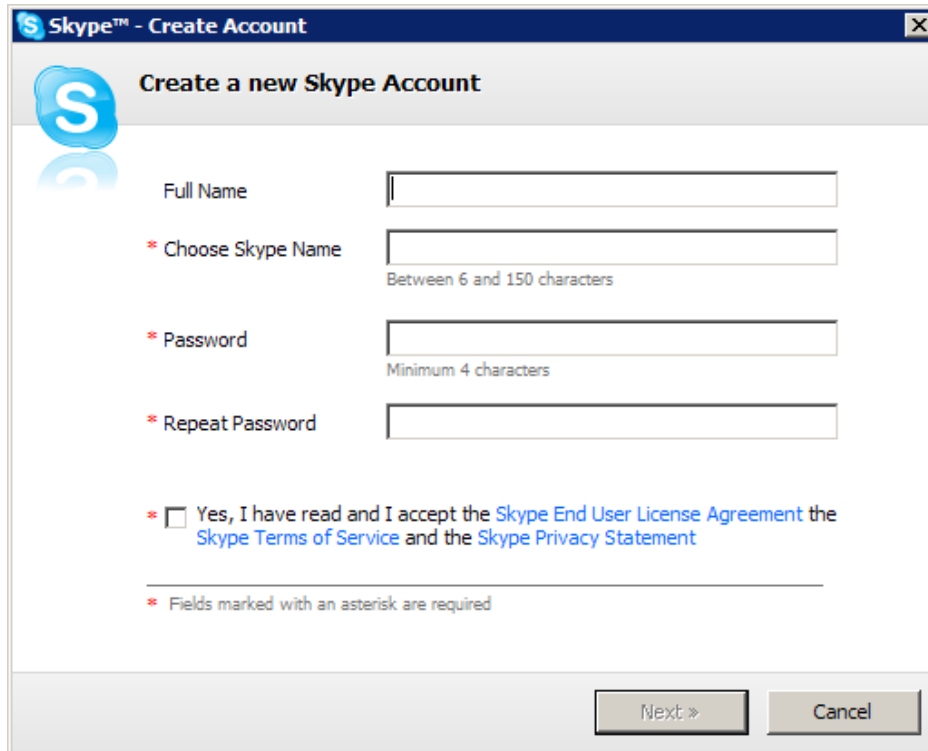
Download

- Most OSs
 - Windows XP
 - Windows Vista
 - Mac OSX
- Not a small download
 - 21 MB (XP)

Installation



Create Account



Skype™ - Create Account

Create a new Skype Account

Full Name

* Choose Skype Name
Between 6 and 150 characters

* Password
Minimum 4 characters

* Repeat Password

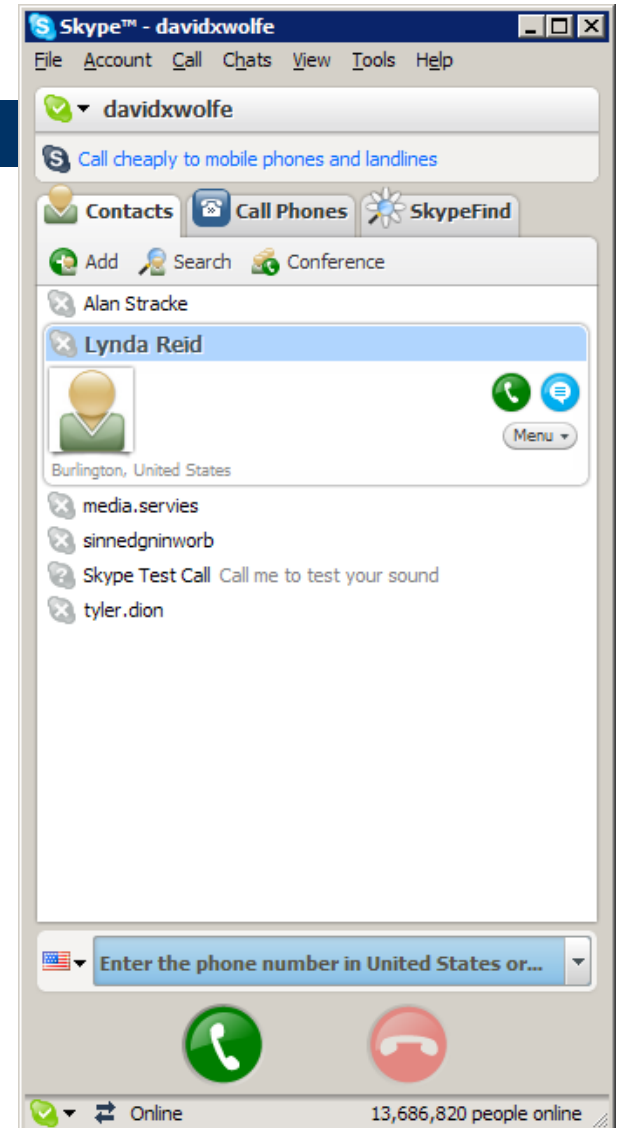
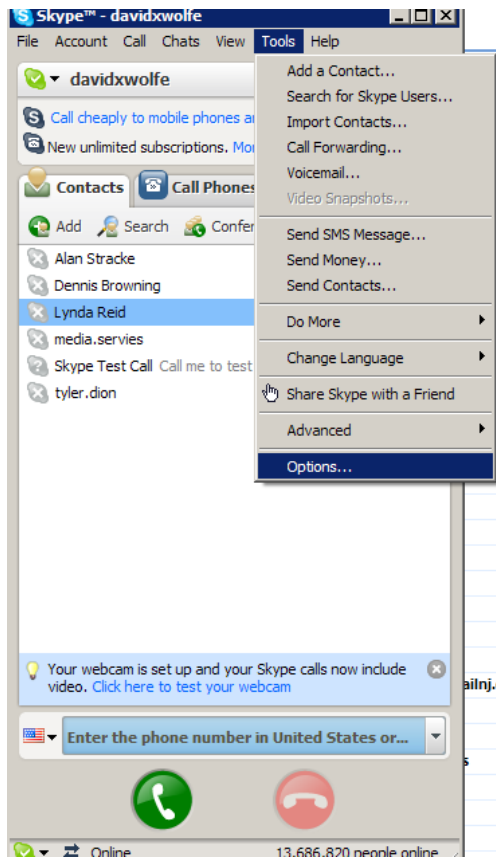
* Yes, I have read and I accept the [Skype End User License Agreement](#) the [Skype Terms of Service](#) and the [Skype Privacy Statement](#)

* Fields marked with an asterisk are required

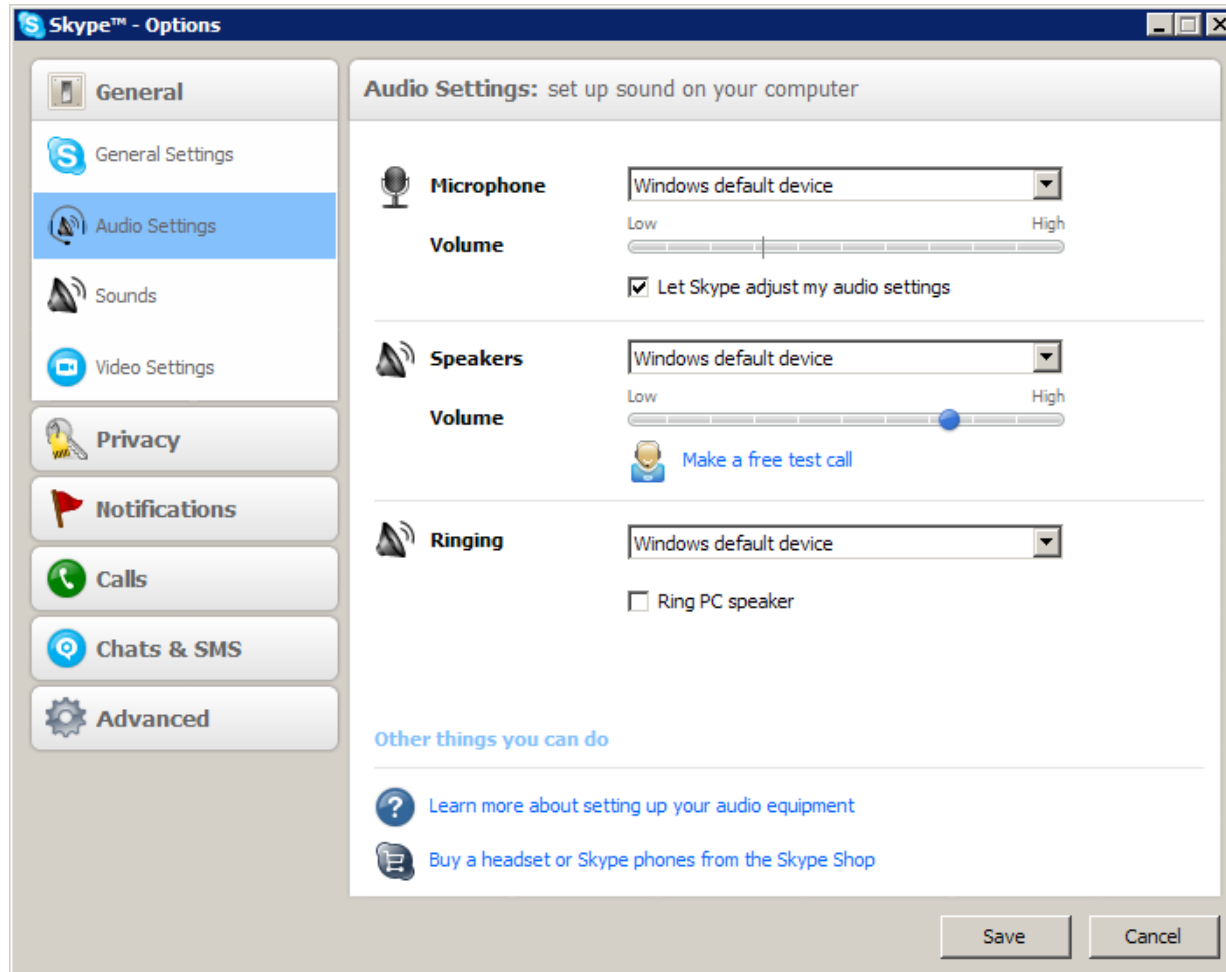
Next >> Cancel

first.last.champlain

Skype Options



Audio



Skype™ - Options

Audio Settings: set up sound on your computer

General

- General Settings
- Audio Settings**
- Sounds
- Video Settings

Privacy

Notifications

Calls

Chats & SMS

Advanced

Microphone Windows default device

Volume Low High

Let Skype adjust my audio settings

Speakers Windows default device

Volume Low High

[Make a free test call](#)

Ring Windows default device

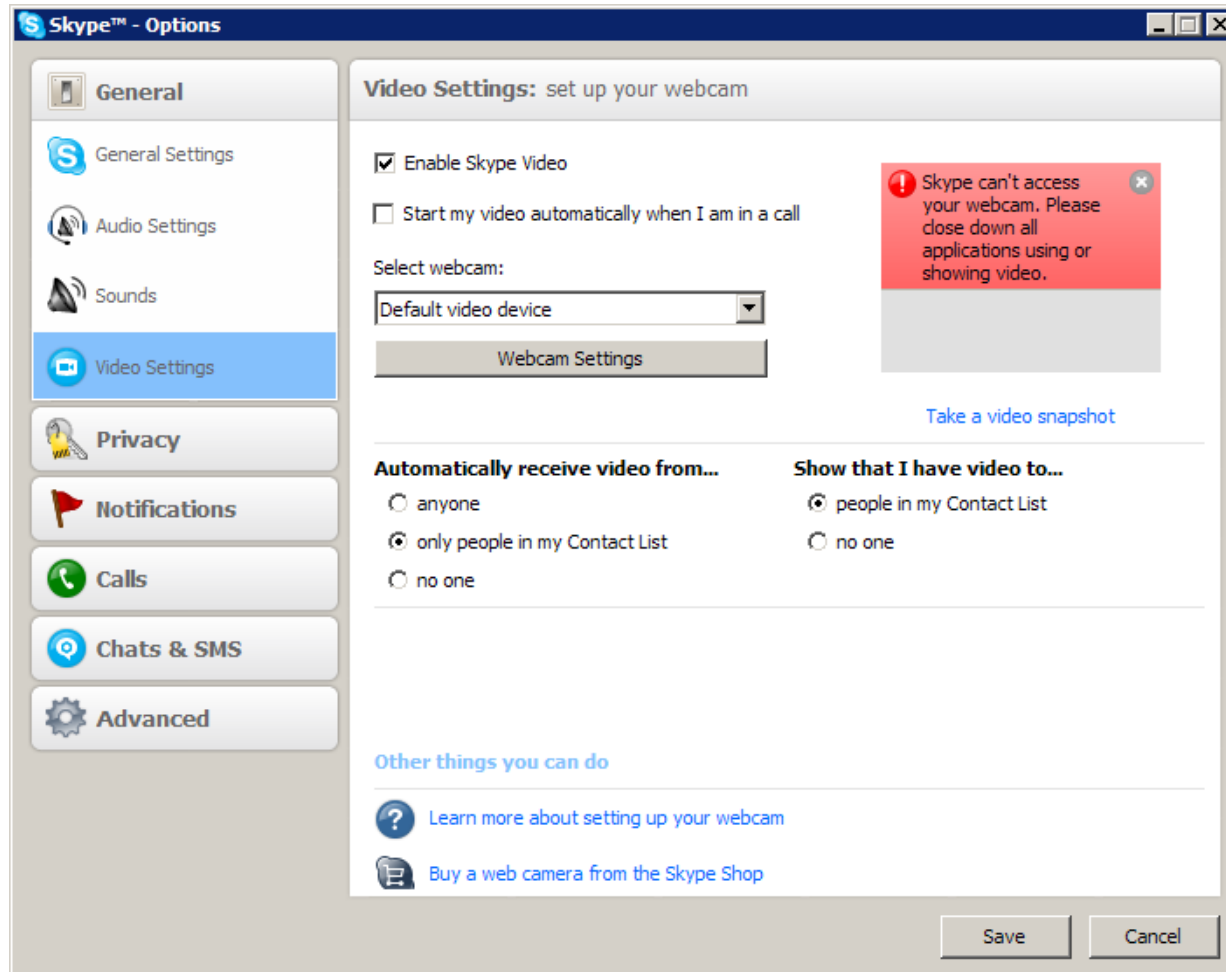
Ring PC speaker

Other things you can do

- [Learn more about setting up your audio equipment](#)
- [Buy a headset or Skype phones from the Skype Shop](#)

Save Cancel

Video



Skype™ - Options

General

- General Settings
- Audio Settings
- Sounds
- Video Settings**
- Privacy
- Notifications
- Calls
- Chats & SMS
- Advanced

Video Settings: set up your webcam

Enable Skype Video

Start my video automatically when I am in a call

Select webcam:

Default video device

Webcam Settings

Skype can't access your webcam. Please close down all applications using or showing video.

[Take a video snapshot](#)

Automatically receive video from...

- anyone
- only people in my Contact List
- no one

Show that I have video to...

- people in my Contact List
- no one

Other things you can do

- [Learn more about setting up your webcam](#)
- [Buy a web camera from the Skype Shop](#)

Save Cancel