



# **Sustainability Plan for Champlain College || Transportation**

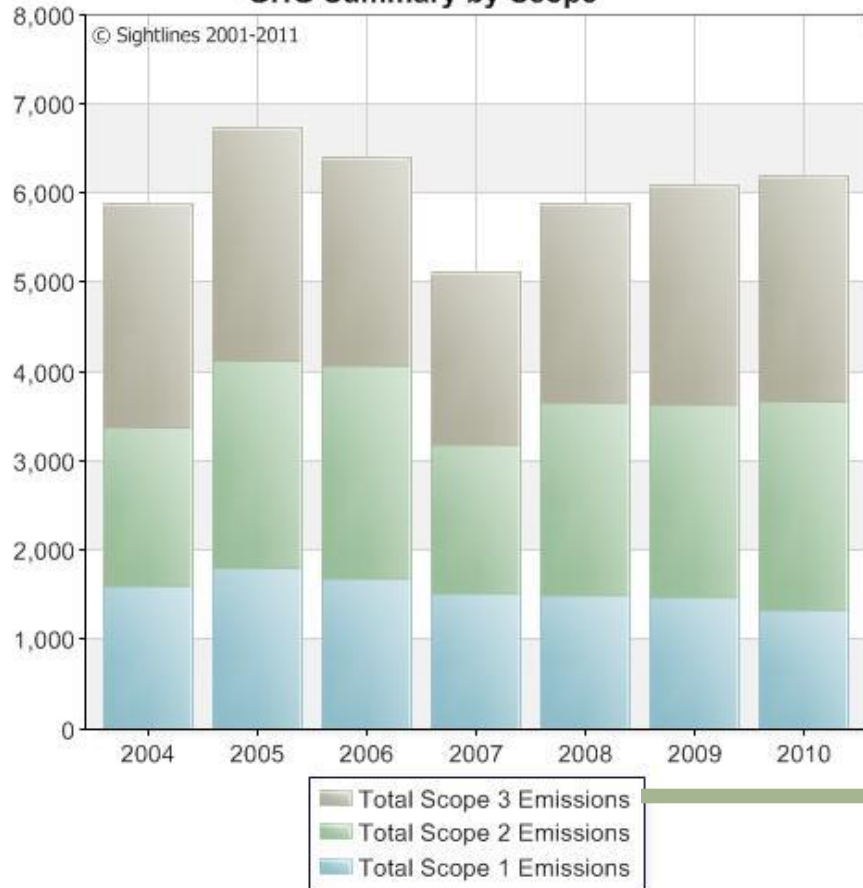
October 13, 2011 || Committee Meeting

# Today's Agenda

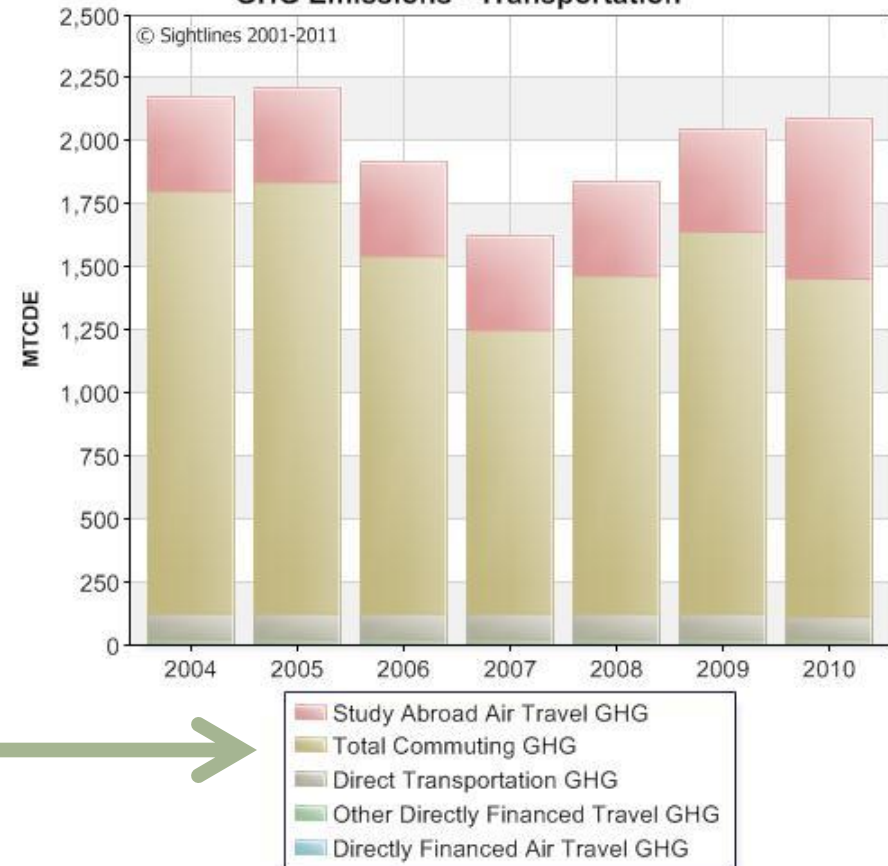
- Introductions
  - Champlain folks: Christina E, Rachel D, Jacob F, Maggie M, Carl R, Joann P, Navah I, Josh K, Kristin W
  - CATMA: Katie & Sandy; Local Motion: Jason; CarShare: Annie; RSG: Beth
- Facilitation reminder
- Transportation Background
  - Carbon impact
  - What we do already
  - Master Plan/Development Guidelines
  - RSG Plan
- External Resources
- Goal & Task Brainstorming
- Announcements/Questions, etc.
- Next meeting: Thursday, November 10th, 9:30am, Hauke Boardroom | | Topic: Energy & Water

# Carbon impact

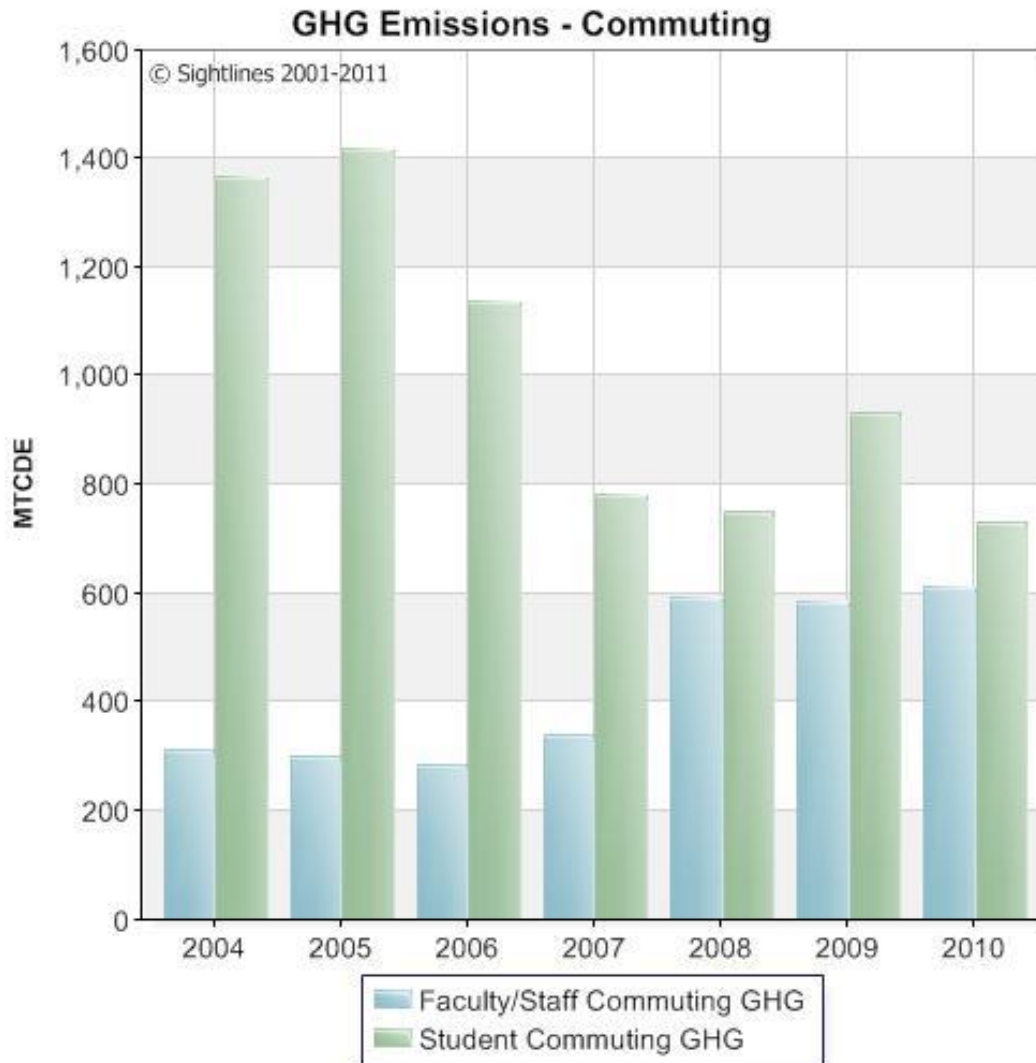
GHG Summary by Scope



GHG Emissions - Transportation



# Carbon impact, cont.



# What we do already

- [Campus Area Transportation Management Association](#) member, including Walk/ride incentive program and FREE rides on [CCTA](#) buses
  - Data collection via employee & student surveys
- Free [shuttle service](#) on campus, to off-site parking lots, and off-site residence halls
- Host for two [CarShare Vermont](#) cars
- Participate in annual [Way To Go!](#) Commuter Challenge (Winner of Large Employer Award in 2008; Honorable Mention for Large Employer in 2011)
- [Safe Street Collaborative](#) participation
- Cyclists have access to shower facilities
- Bicycle rack inventory (2010)
- Reserved parking for hybrid cars (part of LEED credits)



# Master Plan (2007)

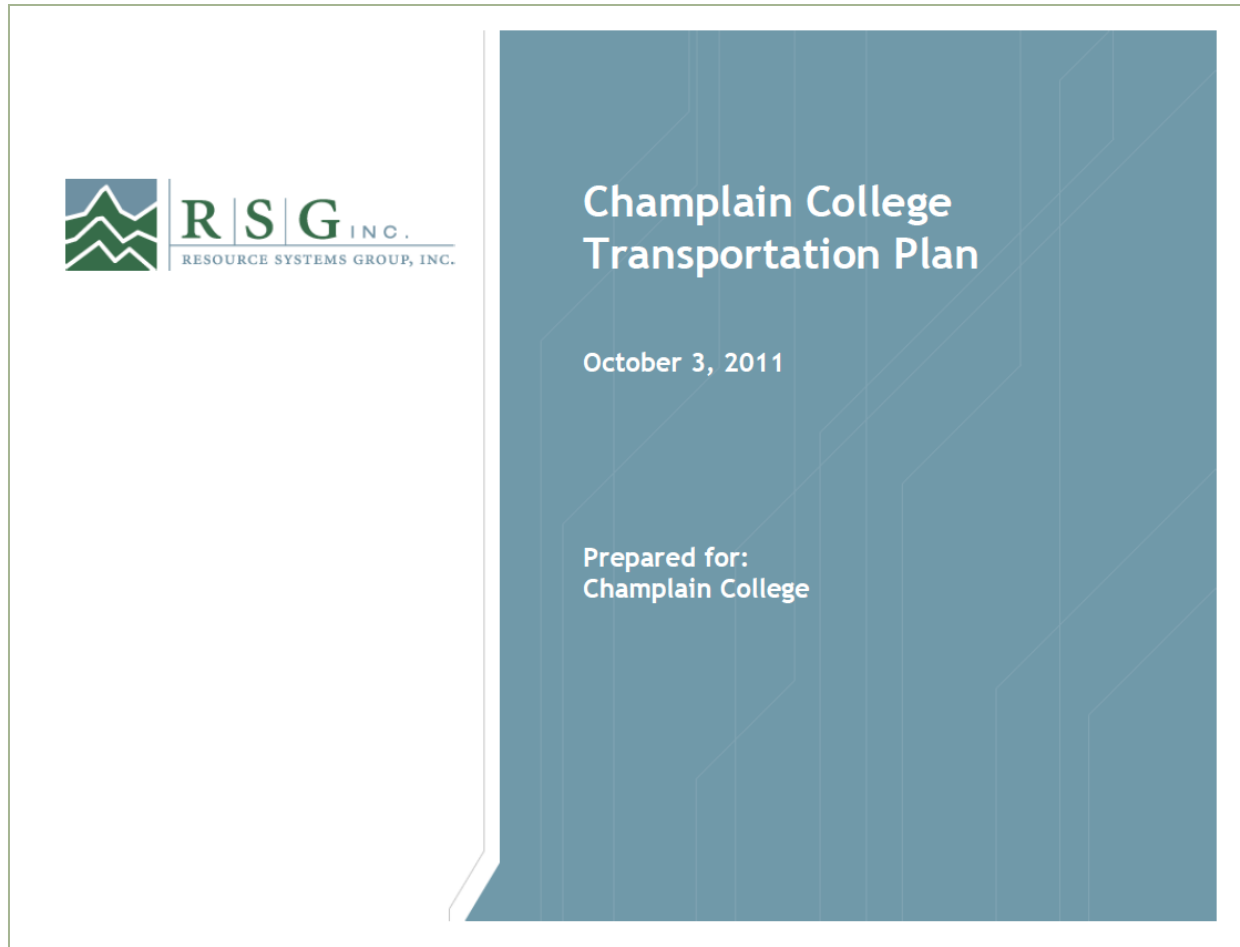
- Section II, Part C “Transportation, Circulation & Parking” (p. 28-38)
- Section IV, “Transportation, Circulation, and Parking Plan” (p. 61-67)

# Development Guidelines (2007)

## Part II “Sustainability” (p.5)

Guideline	Progress to date (2011)
Continue to develop an integrated transportation system that decreases reliance on fossil fuels and builds upon existing programs, such as shuttle partnerships with the Campus Area Transportation Management Association (CATMA) and the University of Vermont, and fully subsidized use of Chittenden County Transportation Authority (CCTA) buses with college ID.	Registered CATMA participant rates as of Nov. 2010 = Emergency Ride Home (62) Bike/Walk (25) Bus (19) Carpool (9)  Employee & Student Bus Usage in FY10: ~3000 rides /month; 37% increase from 2008-2010; (\$37,753/year in FY10)
Support on- and off-campus cycling and walking through landscape, street, path and sidewalk design.	Bike rack inventory in conjunction with Local Motion, Spring 2010; need for more covered bike parking
Consider implementing a car sharing program such as Zipcar for student, staff and faculty use.	Have 2 CarShare Vermont cars located on campus; need stats of usage
Promote “RideShare” programs to encourage carpooling and decrease the number of single occupancy vehicle trips to campus.	part of CATMA offerings for employees; no ride share situation for students
Create a community bike-sharing program for College affiliates.	exploring as part of City-wide effort; 5 bikes for loan at Quarry Hill

# 2011 Transportation Plan (RSG)



Report prepared by Beth Isler, RSG

# Resources: AASHE STARS

## □ Transportation Section ([p. 167-185](#))

Transportation		
OP 14	Campus Fleet	2
OP 15	Student Commute Modal Split	4
OP 16	Employee Commute Modal Split	3
Transportation Tier Two Credits		
OP T2-26	Bicycle Sharing	0.25
OP T2-27	Facilities for Bicyclists	0.25
OP T2-28	Bicycle Plan	0.25
OP T2-29	Mass Transit	0.25
OP T2-30	Condensed Work Week	0.25
OP T2-31	Telecommuting	0.25
OP T2-32	Carpool/Vanpool Matching	0.25
OP T2-33	Cash-out Parking	0.25
OP T2-34	Carpool Discount	0.25
OP T2-35	Local Housing	0.25
OP T2-36	Prohibiting Idling	0.25
OP T2-37	Car Sharing	0.25
Transportation Total Points		12

# Resources

## □ Alta Planning

## □ League of American Bicyclists Campus Designation

PERSPECTIVES IN PLANNING

Volume 1, Number 1

## Best Practices in Campus Bicycle Planning and Program Development

### SUMMARY

*Universities are not only institutions of higher learning, they are also research and thought leaders and places of great innovation. This can be said about cutting-edge laboratory research, as well as sustainable transportation practices such as bicycle planning and program development. While the bicycle is obviously not a new invention or technology, there is a renewed focus and emphasis on prioritizing bicycling due to its many benefits, including health, economic, and environmental benefits. Additionally, students who become bicyclists during their time at university are more likely to continue bicycling after graduation. This white paper documents best practices in bicycle planning and program development at university campuses throughout the United States.*

by Sam Corbett, Joe Gilpin, and Rory Renfro

### Campus Bicycle Master Plans

While bicycling can and has emerged at some campuses through fairly organic means, campuses that have planned for bicycling by developing policies, programs and facilities to better accommodate bicycling as a legitimate transportation mode have yielded greater success in increasing bicycling rates. Campus bicycle

It is recommended that the bicycle plan be developed in coordination with multiple campus departments, including transportation, planning, police, and facilities management, among others. The development of the plan should also include campus outreach efforts, which could include public forums, workshops, and/or online surveys. Many universities have created Bicycle

## LEAGUE OF AMERICAN BICYCLISTS

[About Us](#) | [Join/Donate](#) | [Calendar](#) | [Store](#) |

[PROGRAMS](#) [MEMBERS](#) [RESOURCES](#) [TAKE ACTION](#) [MEDIA CENTER](#)

[Home](#) > [Programs](#) > [Bicycle Friendly America](#) > [University](#)



The Bicycle Friendly University (BFU) program recognizes institutions of higher education for promoting and providing a more bicycle-friendly campus for students, staff and visitors. The BFU program provides the roadmap and technical assistance to create great campuses for cycling.

### BICYCLE FRIENDLY UNIVERSITY

- > [Getting Started](#)
- > [Apply](#)
- > [About](#)
- > [The 5 Es](#)
- > [Resources](#)
- > [FAQs](#)
- > [Bicycle Friendly Blueprint](#)

This program is generously sponsored by:



1 WORLD  
2 WHEELS  
A TREK COMMITMENT

# Goals & Tasks Brainstorm

- Setting “SMART” goals

<b>S</b> Specific	<b>M</b> Measurable	<b>A</b> Achievable	<b>R</b> Relevant	<b>T</b> Time Bound
----------------------	------------------------	------------------------	----------------------	------------------------

- Need to incorporate social justice & equity issues into our plan and goals

# Examples of Goals

- Example Goal 1: Attain a “Bicycle Friendly University” designation by 2015.
  - Related tasks: complete short assessment found on website to ascertain what next steps are needed.
- Example Goal 2: Increase # of employee registrations with CATMA by 10% each year for the next three years.
  - Related tasks: Annual presentation/announcement at Staff Welfare, Faculty Senate, and/or Town Hall Meetings
  - Increased coverage during new employee hire orientation
  - Explore expanding coverage for custodial employees

# Announcements/Questions

- Goals, etc. will be compiled and reviewed
  - ▣ Volunteer to help review: Jacob
- Announcements/Questions?
- Next meeting: Thursday, November 10th, 9:30am, Hauke Boardroom | | Topic: Energy & Water