



What is Sustain Champlain?

This campus-wide initiative strives to infuse sustainability concepts and practices across Champlain College by coordinating and promoting best practices within four areas: our institution, academics, operations, and culture.

Our mission: to create a culture that engages the Champlain College community to make effective use and re-use of our resources, with an eye towards promoting fiscally responsible environmental leadership, and a shared commitment to the ecological health of the planet for present and future generations.

September 15, 2011 | | Committee Meeting

Today's Agenda

□ Introductions

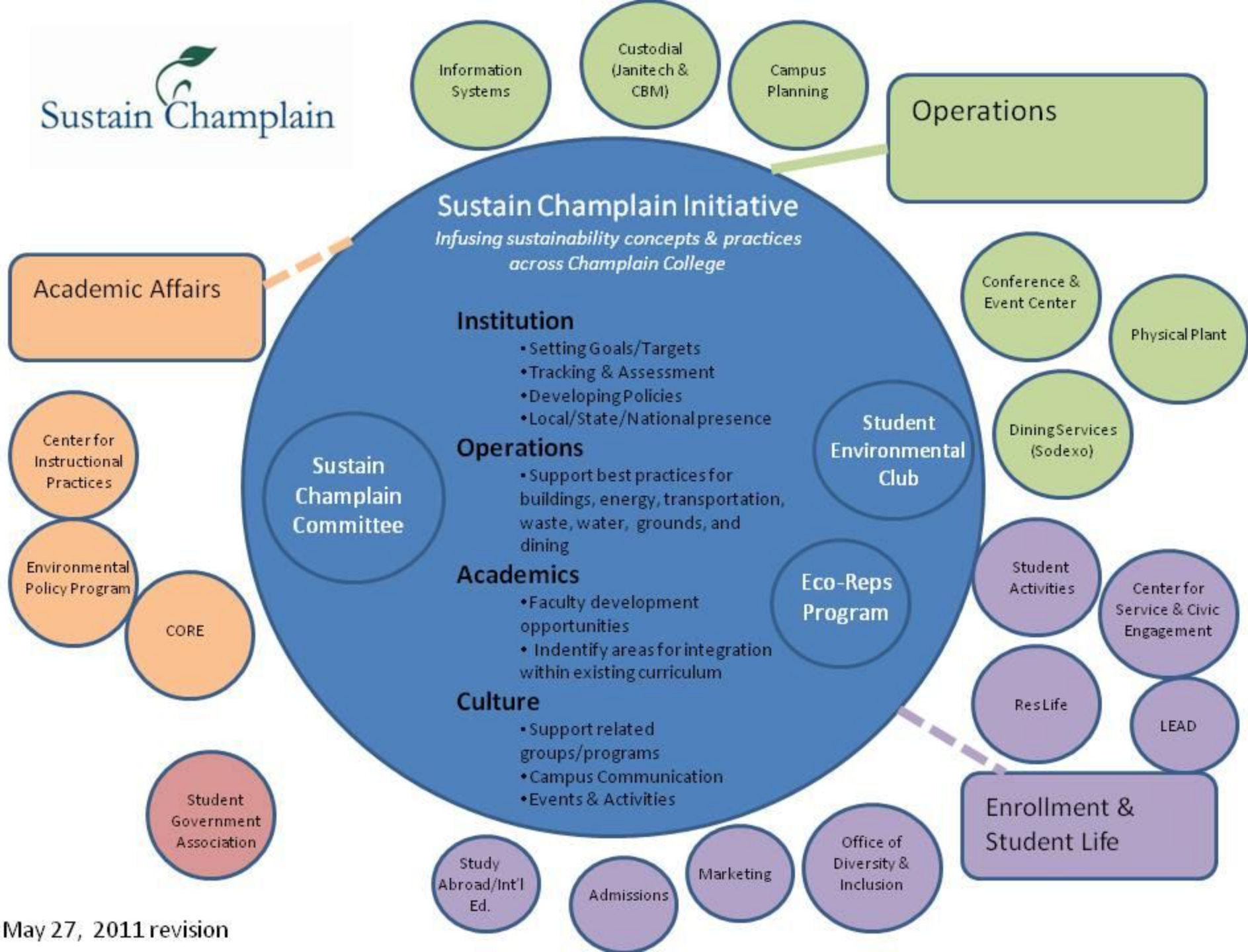
- Christina, Josh Kelly, Brian Andrews, Naomi Winterfalcon, Claire Giroux-Williams, Jess Clarke, Emily Ginter, Maggie Melvin, Rachel Desimone, Lindsey Godwin, Tom Bonnette, Linda Wheeler, Lauren Swanson, Rebecca Carlson

□ Setting the stage for this year's project

□ Defining sustainability for Champlain

□ Announcements/Questions, etc.

□ Next meeting: Thursday, October 13th, 3:30pm, Hauke Boardroom | | Topic: Transportation



Steps in the right direction

Institution

- ✓ 2007 Master Plan & Development Guidelines call for sustainability practices
- ✓ Full Time Sustainability Director hired
- ✓ Active Faculty/Staff/Student Sustain Champlain Committee

Academics

- ✓ Environmental Policy Program
- ✓ Some faculty using sustainability-related topics/projects in courses

Operations

- ✓ LEED-certified buildings (Aiken, Perry)
- ✓ Energy-related improvements for existing buildings
- ✓ Improved waste & recycling program (composting, electronic waste)
- ✓ Annual greenhouse gas inventory
- ✓ CATMA transportation options

Culture

- ✓ Active Student Environmental Club
- ✓ Collaborative programs/events (Res Life, Center for Service)

College Commitments

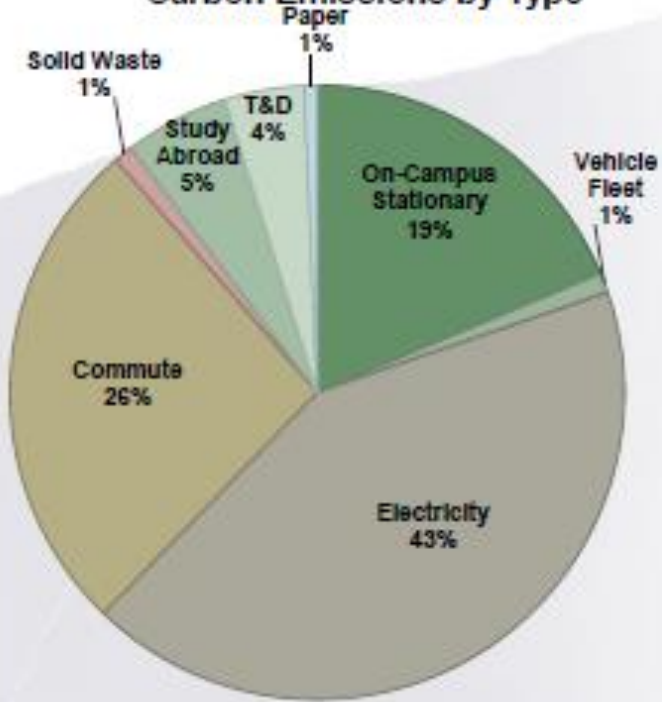
- **Master Plan** <http://www.champlain.edu/Documents/masterplan/MasterPlanFINAL3-07.pdf>
 - “Embrace sustainability”
 - **Development Guidelines**
<http://www.champlain.edu/Documents/masterplan/DevelopmentGuidlinesFINAL6-07.pdf>
- **Strategic Plan**
 - **Sustainability as one of the College’s Core Values**



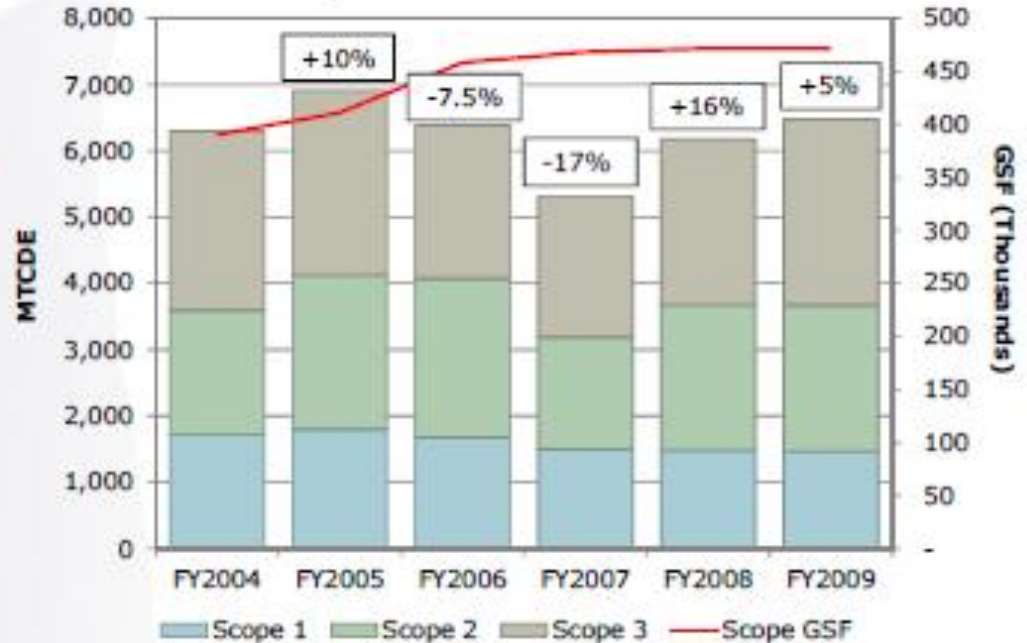
Total FY09 gross emissions: 7,434 MTCDE

A 21% increase in GSF, but only a 3% increase in gross GHGs since FY04

Carbon Emissions by Type



Longitudinal Gross Emissions



Sightlines

Examples from Courses

- **Concepts of Community 120** (Cyndi Brandenburg) Used Hurricane Katrina as a case study to consider notions of environmental justice.
- **Cor 125: Rhetoric II** (Miriam Horne) Students combined what they were learning about persuasion in their rhetoric class with sustainability at Champlain.
- **History 415: Seminar on Contemporary World Issues** (Ron Miller) Focuses on environmental issues and a transition to a sustainable culture, issues such as global climate change and peak oil, food and agriculture issues, renewable energy, as well as the historical, political and cultural context of our current crisis.
- **Event Management Senior Seminar** (Peter Straube). Students have presented on green hotels, green restaurants, and green events.
- **Contemporary Media Issue 315** (Rob Williams) Mid-Term Video Project Assignment: To shoot, edit and upload a one minute YouTube video on a specific sustainability related project on campus. [Film Example](#)

Environmental Club



champlain.college.environmental.club

Culture




SGA Funded Student Initiative Trip to the Biodome & Biosphere in Montreal

Environmental Club
presents:
A Documentary Film Series

9:00pm
Alumni Auditorium

featuring:

FLOW	2/9
<i>EVERYTHING'S COOL</i>	2/23
THE COVE	3/22
CRUDE <small>THE REAL PRICE OF OIL</small>	4/6
THE 11TH HOUR	4/19 

Suggested Next Steps

Institution

- Definition and Values Statement
- **Sustainability Plan**
- Energy Policy
- Purchasing Policy

Academics

- Highlight where sustainability fits into College Academic Competencies, Core, and LEAD

Operations

- Targets for utility & carbon reduction
- Master plan for existing buildings
- Car-Free Campus
- Waste Reduction

Culture

- Integration into and collaboration with various departments
- Identify more areas for student engagement

Best Practices: Institutional Commitments

□ Carbon Neutrality

- American College & University Presidents Climate Commitment (ACUPCC) <http://www.presidentsclimatecommitment.org/> (launched December 2006)

- 65% of our peer institutions have signed (676 total)



□ Overall Campus Sustainability

- Sustainability Tracking, Assessment, and Rating Systems (AASHE STARS) <https://stars.aashe.org/> (launched January 2010)

- 15% of our peer institutions are participating (241 total)



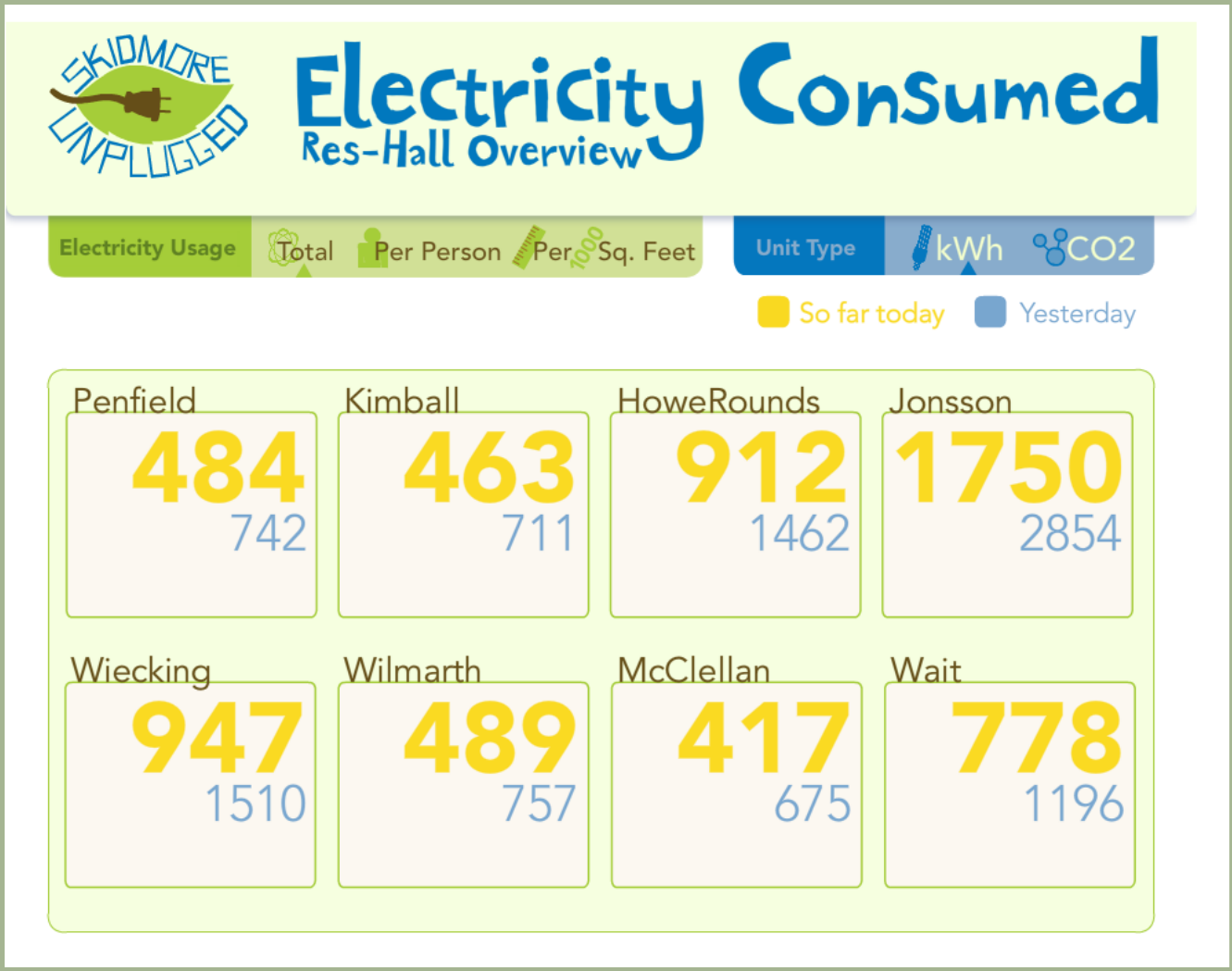
□ Zero Waste

- College & University Recycling Council <http://www.curc3r.org/>

- Zero Waste International Alliance <http://www.zwia.org/>

Best Practices: Energy Feedback Systems

Operations



Best Practices: Faculty Development

- The Piedmont Project @ Emory University (GA)
 - Grassroots effort on the part of a group of faculty to strengthen Emory's engagement with environmental issues and sustainability.
 - Curriculum development effort that seeks to foster an invigorated intellectual community to address global issues and local sustainability challenges
 - Participants commit to:
 - Attend a two-day workshop usually held a few days after graduation.
 - Develop a syllabus for a new course or a course module that incorporates sustainability or environmental issues **appropriate to their field**.
 - Participate in a fieldtrip and discussion session at the end of the summer to share their experiences.
 - Attend a dinner meeting in March to report on experiences and intellectual process.

Best Practices: Service Learning



THE
**CAMPUS
KITCHENS
PROJECTSM**

28 Campuses including:

Northwestern University
Johns Hopkins University
University of Massachusetts Boston
Augsburg College
Saint Louis University
St. Lawrence University
Union College
Wake Forest University
Gettysburg College
Baylor University
University of Vermont
College of William and Mary
Gonzaga University
Marquette University

We are the **future of hunger relief**. We're training the next generation of leaders to implement innovative new models to combat hunger, and we're bringing those models to communities around the nation.

We partner with high schools, colleges, and universities to share on-campus kitchen space, recover food from cafeterias, and engage students as volunteers who prepare and deliver meals to the community.

Discussion of Defining Sustainability for Champlain College

- Equitable use of resources vs. “meeting our needs”?
- Future generations – include humans, non-humans, biosphere?
- Commits vs. strives?
- Should? But what will reality allow?
- Send more comments to cerickson@champlain.edu



Rebecca's Idea for a Visual Display in IDX



plastic containers





more structured



soda bottles



water bottle bottoms



Discussion/Ideas

- Generally positive feedback
- Run as a contest?
- Use found objects rather than collected/donated items – what is really found in our trash that should have gone elsewhere
- Tie in with Trash Bash waste sort?
- Be sure to expect some logistical challenges (safety, “aesthetics committee”, etc.)

Questions?

