

# ChampRides...Bikes!

A publication of Champlain College Transportation

August 2015  
2nd Edition  
FREE!

**ChampRides**  
Free Bikeshare Launched in May  
Pg. 1

**Come on the  
ChampRiders Cruise.  
Every Thursday,  
12:30pm at IDX lot  
Pg. 2**

**Use the indoor bike  
storage rooms in  
Butler and Juniper.  
Pg. 3**

**Rainbow Rack at  
Aiken Hall and other  
rack improvements  
Pg. 4**

**Seen the Transportation  
Google Map yet?  
Pg. 5**

**CCM Center open with  
new covered racks, Fixit  
Station and pump  
Pg. 6**

**Are we a 'Bicycle  
Friendly University'?  
Pg. 7**

**Bike broken?  
ChampShop open for  
use in Juniper Hall  
Pg. 8**

**Cushing Commuter  
Facility still in the works  
Pg. 9**

**Safety Program for  
low cost helmets  
Pg. 10**

**Shovels at the ready!  
Adopt-A-Rack in Winter  
Pg. 11**





## ChampRiders CHAMPLAINS BICYCLE 'GANG'

The ChampRiders are a loose group of employees and students that are passionate about bicycling and helping Champlain College to have “the finest, sustainably focused, transportation program for a small college in the United States”.



LET US DARE

# CHAMPLAIN COLLEGE

## ChampRides FREE CAMPUSWIDE BIKESHARE

Champlain College has nine bicycles available for any student or employee to use for FREE, for up to four hours at a time. Four bikes are available to be checked out at The Hub Desk on the second floor of the IDX Student Life Center, next to the Fitness Center (parked under the stairs on the ground floor). Four bikes are available for use at Lakeside (parked in the stair tower on the south side of the building)

Participants must complete the [online waiver](#) prior to attempting to use the bikeshare program for the first time (one time only). Bikes need to be booked prior to use using [events.champlain.edu](https://events.champlain.edu). Dunham (Bike 1) at Lakeside and George the First (Bike 6) at IDX do NOT need to be booked and can be checked out 'on the fly'.

See [champlain.edu/bike/champrides](https://champlain.edu/bike/champrides) for more details



LET US DARE

## ChampRiders Cruise

### A SLOW PACE, WEEKLY RIDE SERIES

Join us for a weekly bike ride to explore the nooks and crannies of our amazing City. Departing from the IDX parking lot, every Thursday at 12:30pm, students and employees are welcome to turn up and come for a social cruise to enjoy the fresh air, socialize and network with others outside your normal groups, get some exercise and maybe visit a section of Burlington that you are unfamiliar with or have never seen.

See [champlain.edu/bike/champrides](http://champlain.edu/bike/champrides) for details



LET US DARE

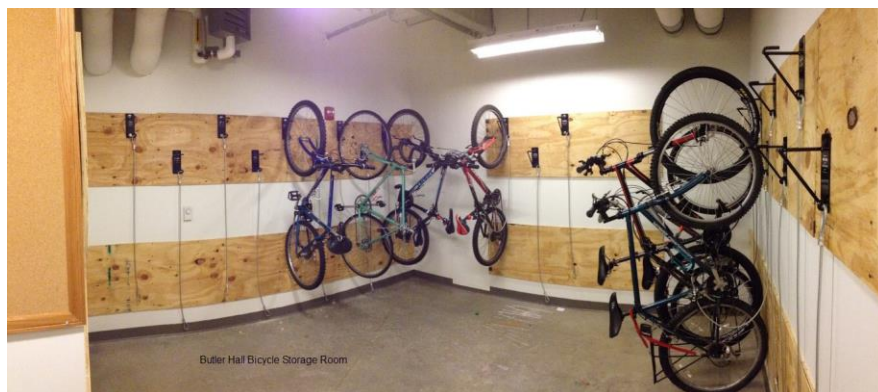


## Bicycle Storage Rooms

### BUTLER AND JUNIPER HALLS

Two storage rooms are available for ALL residential students (also employees and commuting students on request). These rooms are located in the lower levels of the halls and provide a safe, dry storage location for bicycles. Access is by approved Key Card access only and then wall hooks have locking cables to ensure your bicycle is safe. To obtain key card access, simply email [reslife@champlain.edu](mailto:reslife@champlain.edu).

See [champlain.edu/bike/indoorbicyclestorage](http://champlain.edu/bike/indoorbicyclestorage) for more details



LET US DARE

## Rainbow Rack

### AT AIKEN HALL AND OTHER RACK INSTALLS

A new Rainbow Rack in collaboration with the Rainbow Alliance was installed in Aug. 2015. Why a rainbow rack? The Champlain Rainbow Alliance is composed of employees who identify as lesbian, gay, bisexual, transgender and queer and provides a supportive space to discuss issues relevant to Champlain's LGBTQ community, plan educational initiatives and host social activities. This rack highlights Champlain College's commitment and is another small way to bring awareness and celebrate the diversity of our community.

The existing Aiken racks (while not ideal style) have been relocated to new homes where racks did not exist before at North House, Jensen Hall and the S.D. Ireland Center. New covered racks at the CCM Center are detailed on page 6.

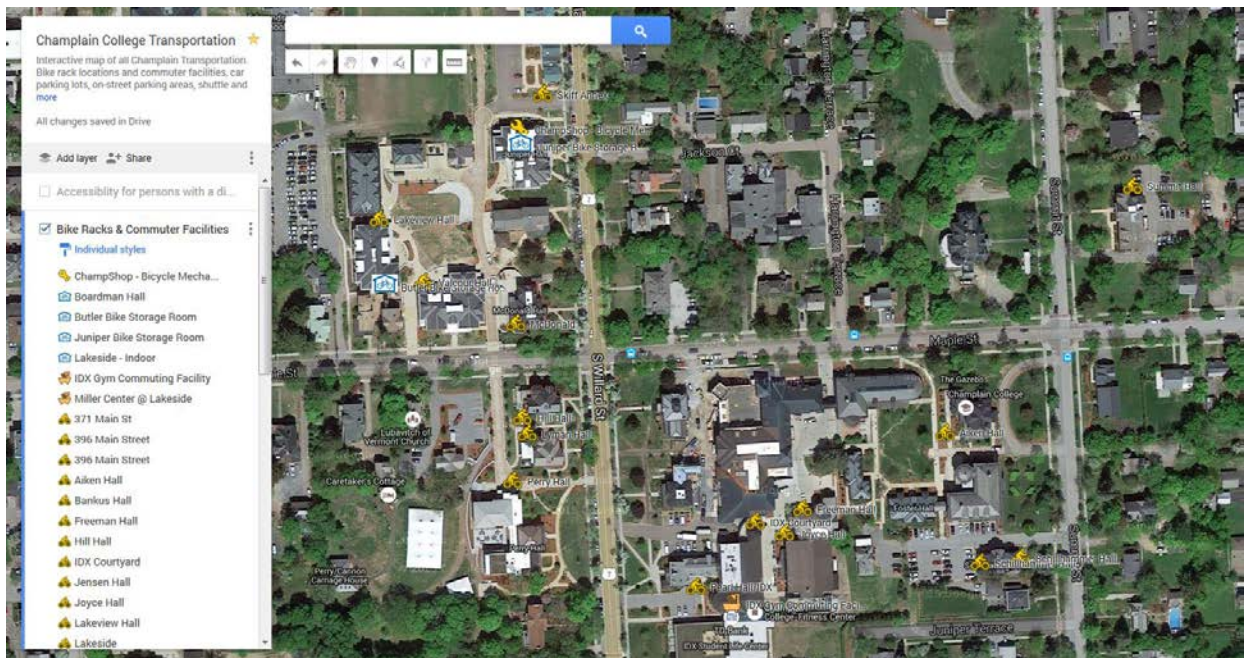


**LET US DARE**

## Transport Google Map WITH CLICKABLE LAYERS

An interactive google map of all Champlain Colleges Transportation Options and facilities is available at [www.bit.ly/GoogleTransportationMap](http://www.bit.ly/GoogleTransportationMap)

This map provides an easily navigable and editable online map that allows the user to ‘turn on’ the layer that interests them most and then click on the icons to learn more about that facility or item. The available layers cover bike rack locations and commuter facilities, car parking lots, on-street parking areas, shuttle and bus stops, biking and walking routes, accessibility for persons with a disability and emergency blue lights.



LET US DARE



## CCM Center

### A TRUE COVERED RACK LOCATION WITH FIXIT STATION AND HEAVY DUTY PUMP

One of the objectives of the 2013 Transportation Plan was to incorporate new covered bicycle racks around campus. Who wants to park their bike all day in the rain while trying to concentrate on classes? Who wants to deal with rusty chains and soggy seats? Not me.

The new bicycle parking for the CCM Center will have covered parking with a new glass canopy attached to Bader Hall. This area also contains a “Fixit Station” which has a stand to hang your bike on while using the attached tools. There is also a heavy duty pump for all season use.



**LET US DARE**



# CHAMPLAIN COLLEGE

## Bicycle Friendly University OFFICIAL DESIGNATION AND ACTIVE TRANSPORTATION PLAN

Champlain College has applied to the League of American Bicyclists for designation as a “[Bicycle Friendly University](#)”. We already know we are pretty bicycle friendly, but this designation will confirm it as well as providing expert feedback and technical assistance and a road map on how to improve it even more.

Part of making Champlain truly bicycle friendly is enacting the Draft “Active Transportation Plan” which delves deeper into the 2013 Transportation Plan with regards to active transportation, such as bicycling, walking, accessibility for the disabled and skateboarding, to provide much needed focus on possible improvements. Once finalized, this will act as a framework and action plan for future improvements in the next 5 years.



LET US DARE

# CHAMPLAIN COLLEGE

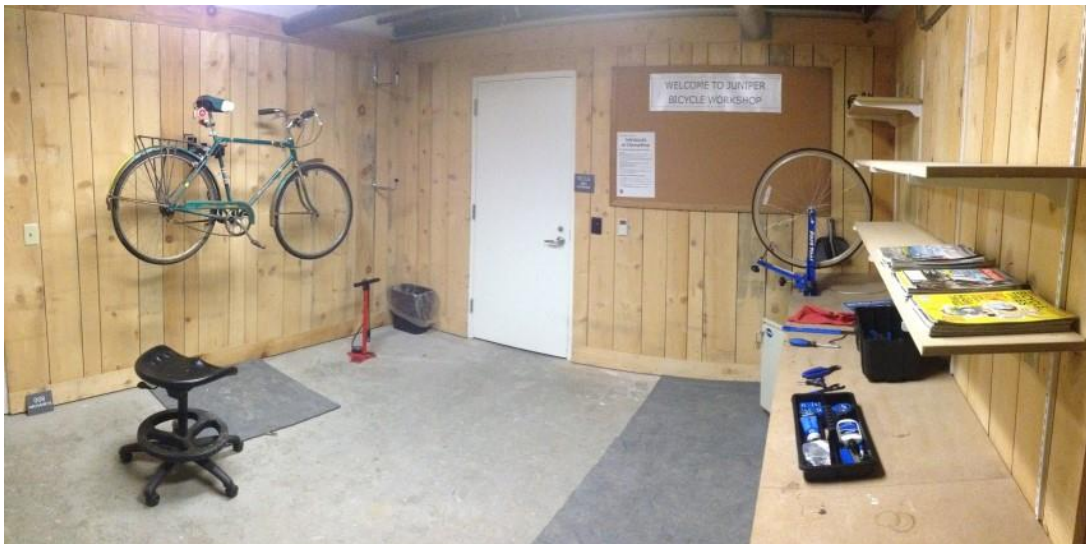
## ChampShop

### SELF-SERVICE WORKSHOP IN JUNIPER HALL

Thanks to the Champlain College [Green Revolving Fund](#), a new self-service bicycle mechanic workshop space has been installed in the Juniper Hall 'Tuning' Room (conveniently located beside the Juniper Hall indoor bicycle storage room) for use by any student or employee to maintain or repair your bicycle. This space has: a bicycle specific deluxe wall-mounted [repair stand](#), full mechanics [tool kit](#), floor pump, truing stand, workbench and more!

To obtain key card **access to the room**, simply email [reslife@champlain.edu](mailto:reslife@champlain.edu). To obtain **access to the tools** (they are kept in a combination locked cabinet), complete the liability waiver, after which you will be given the combination to the cabinet. The space is anticipated to play host to future clinics on bicycle repair and maintenance for employees and students, so watch this space!

See [champlain.edu/bike/champshop](http://champlain.edu/bike/champshop) for details and to complete the liability waiver.



LET US DARE



# CHAMPLAIN COLLEGE

## Commuter Facility

### CUSHING HALL

A new commuter 'end-of-trip' facility for persons who bicycle and walk to campus is slated to be installed in the lower level of Cushing Hall in 2016. The mail room is planned to move to the new CCM Center sometime in 2016, after which the Cushing basement space will be available.

The space will be available for student and employee bicycle commuters to provide a centralized location for commuters to arrive at the campus and prepare for classes or work. This facility is planned to include changing rooms, showers and toilets, lockers, indoor bicycle storage, a bike wash down space and a lounge area with drinking fountain and charging stations for electronics and lights.



**LET US DARE**

## Be A RackKeeper

### HELP US MAKE BIKING IN WINTER ACCESSIBLE

To augment the fabulous work that Physical Plant tackles during the winter season for snow clearing efforts, the “Adopt-A-Rack” program help to clear bicycle racks of snow as soon as possible following (or during) a storm.

Each rack is available for ‘adoption’ by an employee or student who lives or works in the adjacent building. A shovel will be allocated to that ‘RackKeeper’ and the intent is that the Rackkeeper shovels out their rack as soon as practical when they arrive at the office, while Physical Plant it dealing with accessways and sidewalks. Each RackKeeper will be rewarded at the end of the season for their efforts with recognition and a gift card to either Skirack or City Market.



**LET US DARE**



## Protect your Beaver Brains! MULTISPORT HELMETS FOR SALE

To help promote safe bicycling, skateboarding, skiing and snowboarding, the college sells below-cost multisport helmets (Bern Macon EPS helmets) to students and employees for \$34.99.

The helmets are available for purchase at The Campus Store in the CCM Center. These items are available at wholesale prices thanks to Local Motion, Student Activities and bulk purchasing power.

The helmets are available in black, white and grey and come in small, medium, large and extra-large. For helmets specifications, Google “Bern Macon EPS” or go check them out!



LET US DARE