

Sustain Champlain Annual Report

2011-2012



Compiled by Alie Sarhanis, Intern and Christina Erickson, Sustainability Director
May 2012

Our Mission: To create a culture that engages the Champlain College community to make effective use and re-use of our resources, with an eye towards promoting fiscally responsible environmental leadership, and a shared commitment to the ecological health of the planet for present and future generations.



Contents

- Report Summary.....3
- Our Institution4
 - Plans & Funds4
 - Sustainability Action Plan4
 - Master Plan.....4
 - Green Revolving Fund4
 - Staffing.....4
 - Sustainability Director4
 - Sustainability Intern.....5
 - Work Study Positions.....5
 - Sustain Champlain Committee Members.....5
 - Memberships.....6
 - Tracking and Assessment6
 - Printers7
 - Waste Assessment.....7
- Academic Program9
 - Integrating Sustainability into the Curriculum9
 - Environmental Policy Program9
 - Student Projects9
- Physical Operations9
 - Waste Reduction9
 - Infrastructure.....9
 - New Waste Hauler Guidelines..... 10
 - Outreach..... 10
 - Activities & Events 10
 - Energy Conservation..... 11
 - Energy Efficiency..... 11
 - Energy Retrofitting 11
 - Kill-A-Watt Challenge..... 11
 - Outreach..... 12
 - Water Conservation 12
- Purchasing 13

Buildings	13
Perry Hall	13
Transportation.....	13
Resources for Bicyclists	13
CATMA.....	13
CarShare	13
Way to Go Week.....	13
Culture	14
Community Garden	14
Communication	14
Eco-Reps Program	14
Events	15
In the News.....	15
Awards.....	16
Collaborations	16
Presentations/Trainings	16
Where do we go from here?	17

Report Summary

This annual report presents the activities, events, successes, and next steps for the Sustainability Director, the Sustain Champlain Committee, and related partner programs and departments. This report will address the following four areas where we attempt to integrate Sustain Champlain’s mission:

1. Our institution
2. Our academic program
3. Our physical operations
4. Our campus culture

Our Institution

Plans & Funds

Sustainability Action Plan

This guiding document lists the initiatives that Champlain College has taken to advance sustainability on campus and outlines the policies and procedures that should be implemented in the future. By setting target dates, Champlain College will have a timeline and strategy for moving forward with sustainability. The draft of this plan is available on the Sustain Champlain [website](#) and on Clearspace.

Master Plan

The new residence hall ("Res Tri A") is currently in the process of being built to LEED Gold Standards.

Green Revolving Fund

*Green revolving funds invest in enhancing energy efficiency and decreasing resource use, thereby reducing operating expenses and greenhouse gas emissions. The cost savings boost the bottom line and replenish the GRF for investment in the next round of green upgrades.*¹ In 2012, Champlain College will be starting a Green Revolving Fund with an initial investment of \$50k using campus and donated funds and a commitment to growing the fund over the years. Our efforts will contribute to the [Billion Dollar Challenge](#), which encourages colleges, universities, and other nonprofit institutions to invest a combined total of one billion dollars in self-managed revolving funds that finance energy efficiency improvements.

Champlain's Green Revolving Fund will be initially funded by donations via Office of Advancement; rebate funds from BED, Vermont Gas, etc.; and an initial sum from college's endowment (if needed to reach \$50,000 by September 1, 2012). Once fund is started, additional investments include savings from the utility costs that would otherwise be paid if the projects had not been implemented as well as additional donations from parents, alumni and friends.

With established project criteria proposed projects will be evaluated through the GRF committee comprised of Physical Plant Director, Sustainability Director, Budget Director, one administrator, one faculty member, and one student. A portion of the fund may be available for educational/behavioral-based projects that may not necessarily have a monetary return. Target performance for the fund is to average a 5-10 year simple payback on funded projects. The fund is NOT meant for: regular daily/annual maintenance or capital campaign projects (though it could conceivably supplement a capital project).

Staffing

Sustainability Director

Christina Erickson is a full-time staff member and is supervised by Interim Associate VP for Campus Planning and Auxiliary Services, John Caulo. Her office is located in Skiff Hall which houses many Student Life staff members. In 2011-2012 Christina also became co-chair of the Staff Welfare Committee and was a member of the College Council. Christina received the 2012 Staff Council Service award.

¹ Greening the Bottom Line: The trend toward green revolving funds on campus (Sustainable Endowments Institute), 2011 <http://greeningthebottomline.org/>

Sustainability Intern

During the Spring 2012 semester, a student from the University of Vermont, Alie Sarhanis, assisted Christina Erickson in the Sustain Champlain office for her senior capstone. Her main duties included: drafting the Champlain College Sustainability Action Plan, updating PowerPoint presentations for the monthly Sustain Champlain Committee meeting, updating the weekly E-Bulletin, performing several inventories concerning waste, rehydration stations and bicycle racks and creating a [Google Map](#) for each inventory.

Work Study Positions

This year three students worked with Sustain Champlain: Lauren Swanson '12, Rebecca Carlson '14, and Devin Carter '14. The Work Study positions are an opportunity for students interested and passionate in sustainability issues to further the culture of sustainability within the Champlain College community. Students in this position help raise awareness and encourage environmentally responsible behavior of campus residents. The students and Christina met on a weekly basis to discuss, follow-up, and reflect on current projects. Together, these students spearheaded the student Environmental Club, an SGA approved organization.

This year's projects included:

- Environmental Club administration
- Better World Book collection
- Documentary Film Series
- Trail work day
- Designing and selling reusable tote bags
- Graphic design support (posters, etc.)

Sustain Champlain Committee Members

The committee met each month to share updates, provide suggestions for future projects, and plan events. This year we focused on developing ideas and goals for a comprehensive sustainability plan for the College. After a brief PowerPoint presentation, a discussion would occur around the topic presented. Overall, the committee was well attended.

Name	Title	Department
<i>Staff</i>		
Christina Erickson	Sustainability Director	Campus Planning & Auxiliary Services
Claire Giroux-Williams	Assistant Director for Residential Life Operations	Res. Life
Rachel Desimone	Assistant Director for Residential Life	Res Life
Emily Ginter	Sr. Activities Planner	Student Life
Tom Bonnette	Director	Physical Plant
Linda Wheeler	Director	Events Center

Jess Clarke	Senior Copywriter	Marketing
Maggie Melvin	Service Coordinator	Center for Service & Civic Engagement
Ted DiGrande	General Manager	Dining Services
<i>Faculty</i>		
Andy Burkhardt	Emerging Technologies Librarian	Library
Naomi Winterfalcon	Adjunct	CORE
Joann Patel	Associate Professor Game Art & Animation	CCM
Kristin Wolf	Assistant Professor	CORE
Lindsey Godwin	Assistant Professor	BUS
Valerie Esposito	Director, Environmental Policy	EHS
<i>Students</i>		
Lauren Swanson	Sustainability Rep Work Study	CCM
Devin Carter	Sustainability Rep Work Study	CCM
Rebecca Carlson	Sustainability Rep Work Study	EHS
Navah Lemieux	RA, Spinner Place	

Memberships

Champlain College continued with our institutional membership with the US Green Building Council, the Association for the Advancement of Higher Education (AASHE) and as a partner of the Vermont Campus Sustainability Network (VCSN).

Tracking and Assessment

Champlain College is a client of [Sightlines](#), a facilities asset advisory firm that specializes in tracking sustainability indicators including energy, transportation, waste, and greenhouse gas emissions. Each year, Champlain submits our latest figures so that we can track our own progress, compare that to peer institutions, and set benchmarks as we move forward. This year our report included suggestions on setting targets for carbon reduction. See [FY2011 report](#). Highlights from this year's report include:

- 26% reduction in energy use between 2005-2011, with an estimated cost avoidance: of \$1.5M and a carbon avoidance of 4,940 MTCDE

- Gross greenhouse gas emissions decreased by 2% even as owned Gross Square Footage increased by 23% between 2004-2011.

Printers

Over the summer (2011) Symquest conducted an inventory of the number of printers on campus. At that point we had 1 printer for every 2 employees. To save the amount of paper being used and to reduce operational costs, Shelley Navari, Richard Terricciano and Christina Erickson developed a strategy to:

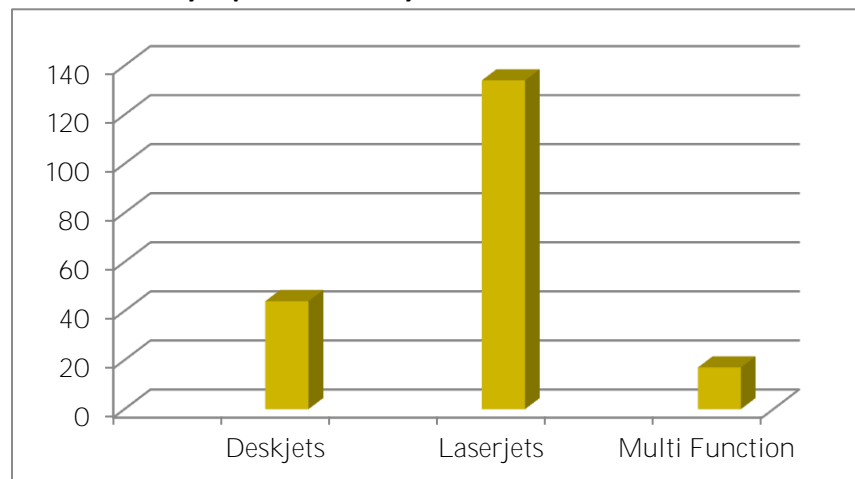
- Change print drivers to duplex
- Review multifunction locations
- Add secure mailboxes - train users
- Emphasize drop box via LMS - train users
- Remove desk jets and unnecessary lasers
- Consider Sentinel monitoring system

Ideally, our desired results from this initiative will be:

- Everyone has access to a updated device that meets their multiple needs (including confidentiality)
- Reduced energy and paper = decreased carbon footprint
- Lower operational costs
- Partner with Departments & Manage our time expectations

In April, the Continuing Professional Studies team consolidated their printers from over twenty down to one shared, economical printer. We hope to see the number of personal, desktop printers continue to decrease.

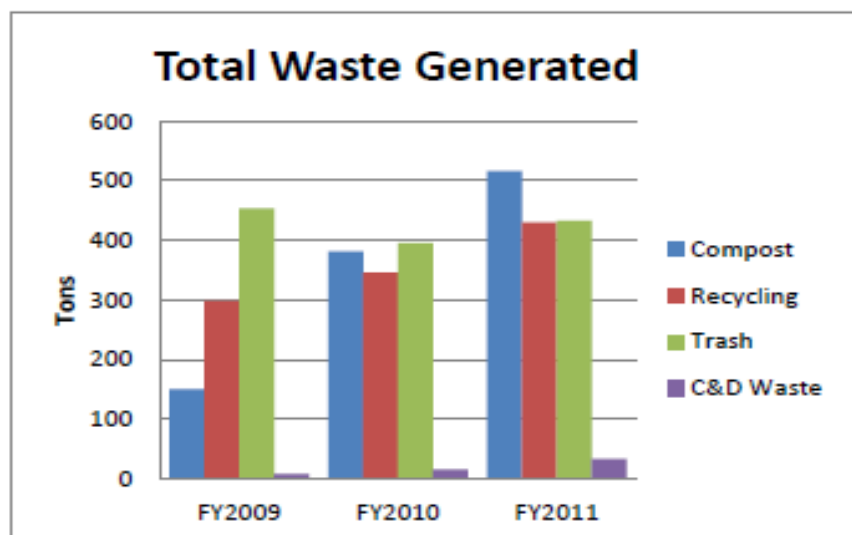
Symquest Inventory Results – Summer 2011



Waste Assessment

Using figures provided by our Casella account representative, we've calculated a breakdown of our waste stream. Trash is the most accurate weight, as the large compactor is billed by actual weight, not volume as most other bins are. Highest rates of trash are during the summer during conference season. Each stream is increasing, which is likely a result of our larger campus population.

	TRASH (to the landfill)	RECYCLING (to the MRF)	COMPOST (to Intervale Compost)
FY2009	450 tons	300 tons	150 tons
FY2010 (percentage increase over prior year)	396 tons (12% decrease)	346 tons (15% increase)	381 tons (154% increase)
FY2011 (percentage increase over prior year)	433 tons (11% increase)	430 tons (24% increase)	517 tons (36% increase)
FY2011 equivalent in African elephants (average 8 tons)	54 	54 	65 



Next Steps:

Over the spring semester we put out a Request for Proposals (RFP) for our waste contract to include more a value-added, holistic waste management program. We chose to continue with Casella as our hauler as they clearly demonstrated their ability to work with us in this manner. We are in the process of renegotiating our contract with Casella and are developing a plan to improve our waste calculation figures.

Academic Program

This year we continued to discuss ways of integrating sustainability concepts into the Champlain curriculum.

Integrating Sustainability into the Curriculum

In May we are co-hosted a peer session called “Sustainability and Social Responsibility in the Curriculum”. During this session, which had over 20 faculty members in attendance, we discussed:

- What is currently happening in regards to sustainability in the curriculum? What classes are taught, assignments given, etc.
- What are ways that we can broaden and expand what is currently happening? See the Seven Tips for Fostering a Culture of Sustainability (Attached poster will be offered during Poster Session)
- What are needs or interests of faculty in having more professional development opportunities?
 - Is there an interest in a program similar to the Faculty Fellows program offered at [UVM](#) and other institutions? Or utilizing programs such as the [Northwest Earth Institute](#) Discussion Groups?
 - Gathering of readings and resources that we can utilize such as the [New Earth Archive](#)
- How might we further broaden the descriptions of the [College Competencies](#) (particularly #2 – Ethical Reasoning and # 3 – Global Citizenship)?

Hosted by Lindsey Godwin (BUS), Valerie Esposito (EHS), Kristin Wolf (Core) and Christina Erickson (Sustain Champlain)

Environmental Policy Program

- In conjunction with Sustain Champlain, the EP program hosted Will Raap, the founder of Gardener’s Supply Company and the Intervale Center, during the Spring semester (part of the BYOBiz series). We also co-hosted two field trips to the Materials Recovery Facility for students.
- Christina Erickson taught a new course for EP Students SCI 210: Foundations of Ecology

Student Projects

Over the year we hosted a marketing major, Josh Kelly, as an intern who reviewed Sustain Champlain’s current marketing efforts.

Physical Operations

Waste Reduction

Infrastructure

Throughout the year we provided guidance on locating, ordering, and placing various recycling/trash/compost bins across campus. The Sustainability Intern took an inventory of the bins and created a [Google Map](#) highlighting the location of these receptacles. New dual stream lids for exterior waste containers were also installed. We received 40% of cost sharing from CSWD for the lids (total of \$700.00 from CSWD).

A [water refill station Google Map](#) was created to encourage faculty/staff/students to reduce their consumption of bottled water.

Also, our volunteer “Green Teams” continued to assist with waste separation stations for large outdoor catered events, including Spring Meltdown (April) and the first Admitted Students Day (April). Having a staffed station makes an enormous difference in getting items properly separated.

New Waste Hauler Guidelines

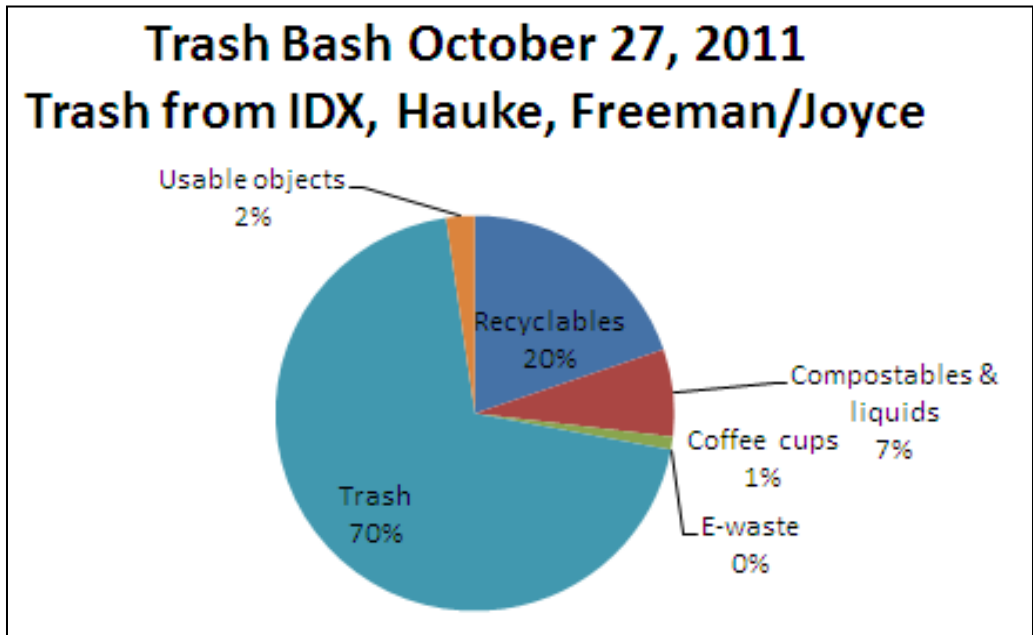
Since the contract with Casella expires on July 1, 2012, we decided that our waste hauler should play a more prominent role in our sustainability efforts regarding waste. In the new contract, a more holistic approach will be taken by Casella, including assistance with education/outreach and infrastructure.

Outreach

- Green Team helped people sort their waste at the New Student BBQ (September 2011)
- Premiered the [Sort It Out](#) video at New Student Orientation and distributed reusable water bottles (September 2011)
- Sustain Champlain - [Declutter Your Life](#) article to encourage students/faculty/staff to do more with less (January 2012)
- Poster for recycling at Lakeside by the coffee area

Activities & Events

- Trash Bash waste sort, October 2011.
And the results were...



- Cardboard collection spots during Move-In
- During the last week of April, Hallkeen Management, Inc. had a week-long electronic disposal event for Spinner Place, where residents could bring old televisions, computers, computer accessories, etc. to the parking structure to be disposed of properly.
- Annual Move-Out Collection for residence halls, April/May 2010 (co-hosted by Res Life) – Casella loaned us bins that we had in the halls for two weeks (Finals & Senior Week). Eco-Reps and Environmental Club students assisted on the big move out day reminding people to recycle and donate. A huge improvement over last year! Donations included: over 8 van loads of items delivered to Goodwill, ReStore and 270 pounds of food to Food Shelf.
- Book collection for Better World Books at the end of the Fall 2011 and Spring 2012 semesters. At the end of the Fall Semester we received over 800 pounds of books and over 500 pounds of books in the spring. Many of these books were donated to the Peace & Justice Center for their South Africa book drive.



Next steps:

There is still need for further clarification and designation of role regarding compost collection at catered events, particularly in areas where there are not bins (Gym) or for outdoor events. Also, there are times of the year when it is harder to solicit volunteers for the Green Teams (especially during Graduation), so we may want to consider hiring students, if this is seen as a worthy endeavor.

Continue adding water refill stations across campus, especially in the IDX Student Center.

Energy Conservation

Energy Efficiency

Aiken Hall was used as a subject for the Vermont Department of Public Service's Energy Efficiency Research project to understand how businesses use energy. The information gained from the study will be used to develop and improve energy efficiency programs in the future.

Energy Retrofitting

All overhead lighting in Spinner Place apartments is being replaced with new energy efficient light fixtures using LED bulbs. This retrofitting of light fixtures will occur throughout the next several months, with work already done in about a dozen units thus far.

Kill-A-Watt Challenge

This year we continued a competition among Champlain College residential halls to reduce electricity usage. The winner of the competition was determined by the hall that has the largest percentage reduction of electricity

over baseline consumption as well as the highest rate of participation in various events on campus and within the residence halls. The aim of this competition was to raise student awareness regarding electricity conservation and related behaviors in Champlain College residence halls - a skill that students will carry with them wherever they live in the future. The Challenge was a collaborative project between Sustain Champlain and Residential Life.

We aimed to increase student participation by setting up an “I pledge” booth in the IDX Student Center. Students, faculty and staff were encouraged to make a pledge to reduce their energy consumption for the month of February. In return, they would get their picture taken with Chauncey the Beaver (the Champlain College mascot).



All told, we saw an average of 9% energy savings across all of our main campus buildings. 14 main campus buildings saw savings between 4-36%, two were even with October usage, and five buildings actually increased usage from October.

The challenge was a an improved success over last year. Some RAs were very involved, in other buildings residents didn't even know the challenge was happening. Overall, we did see a reduction in usage but there are still several limitations in metering (due to combined buildings, etc.) that we could not get a totally accurate accounting of usage. To see the scores for the 2012 Kill-A-Watt Challenge: <http://cckillawatt.wordpress.com/2012-scores/>.

See more at <http://www.champlain.edu/Sustain-Champlain/Sustainable-Culture/Kill-A-Watt-Challenge.html>

Outreach

Sustain Champlain hosted a “Weatherize Workshop” to educate off-campus students, faculty and staff how to save money on their heating bills through weatherization and energy efficiency. The participants received some free items such as CFL light bulbs and educational materials on measures they can undertake themselves to button up their off-campus homes.

With the help of President David Finney, a message was sent to students/faculty/staff to power down their electronics during winter break when the College is closed for a full week.

We also advised The Lodge, a student-run café in the IDX Student Center, on how improve set up their waste practices.



Water Conservation

At Keen's Crossing, the Cascades, and Spinner Place, maintenance replaced the shower heads and sink faucets in the apartment with new models that will not dispense more than 1.5 gallons per minute. As toilets need to be replaced, new models are installed that also waste less water.

Purchasing

At Keen's Crossing, the Cascades, and Spinner Place, all cleaning products and paint used by building staff are now environmentally friendly.

Buildings

Perry Hall

Perry Hall achieved LEED Platinum certification level, one of three buildings in Vermont to do so. The project garnered 88 LEED points, tying it for 21st in the entire world at the time of certification, and is filled with many innovative approaches to sustainable development. Learn more about the building's sustainable design features [here](#). An informational booklet titled, "The Welcome and Admission Center at Roger H. Perry Hall" was printed this semester and will be available online in the near future.

Transportation

Resources for Bicyclists

Updates were added to the 2010 bicycle rack inventory and a [bicycle rack location Google Map](#) was created to encourage faculty/staff/students to ride their bikes to, from and around campus.

CATMA

In attempt to increase awareness of and participation in CATMA benefits and programs, we hosted them on campus for various events:

- Town Meeting (April)
- Tabling at Employee Retreat (May)

CarShare

In effort to increase participating in the CarShare Vermont program, Champlain College offered a free CarShare VT membership to students, faculty and staff (full & part time) for new and existing members. Champlain covered the cost of the annual membership fee to promote that car-sharing is good for the environment, community, and wallet. There are two CarShare spaces on campus by McDonald Hall. [Read more...](#)



Way to Go Week

At the employee retreat, we promoted 'Way to Go Week'. A station with computers was set up for employees to sign on to the commuter challenge.

Culture

Working on creating a culture of sustainability on campus has been done in a variety of ways including outreach, events, and communication. In addition to the outreach efforts described in the sections above, the Sustain Champlain team worked on the following.

Community Garden

This is the second year of the garden and all plots have been adopted.

http://www.champlain.edu/Documents/sustain_champlain/GardenDescriptionRegistrationForm.docx

Communication

This year we continued building our Web 2.0 presence, including: [Blog](#), [Facebook site](#), [Twitter account](#), and [videos](#) created by Rob Williams' media students. Additionally, the Sustain Champlain [website](#) was updated.

The Sustainability Intern created a Sustain Champlain bulletin board display in the downstairs of the Hauke Building (see image on the right).

Each week, we sent out a "Sustain Champlain e-bulletin" filled with updates, announcements, and info on upcoming events and opportunities.

The [Champlain Compass](#) was greatly utilized to promote different Sustain Champlain events and programs.

In March, an email was sent to inform departments about copy paper purchasing: "This is just a friendly reminder to let you know what we recommend as the most cost effective and environmentally friendly copy paper product (for the regular day-to-day copying & printing needs): **ASPEN 30 20# weight**. This is a 30% post-consumer recycled content paper that we are able to get a great price on, due to a combined purchasing agreement with UVM through Office Max. Currently, we can purchase Aspen 30 paper for \$33.23/Cartron and the basic Office Max non-recycled (P1OX9001) is \$39.99/Cartron. If you have any questions, contact Shelley Navari or Christina Erickson. Thanks."

Monthly Sustain Champlain Committee meetings were held to discuss ideas and identify issues surrounding campus sustainability and to work on developing our Sustainability Action Plan.



Eco-Reps Program



In the fall of 2012, eight students - Grace vonRabenstein '14, Kyle Judd '15, Allison Markowitz '15, David Bender '13, Skye Ogren '15 (fall only), Kaylin Beauregard '15 (fall only), Nate Getzow '13 (spring only) joined the Champlain College Eco-Reps Program in our residence halls. This program trains student leaders who model and



promote environmentally responsible behaviors in the residence halls by educating their peers. Eco-Reps is a program of Sustain Champlain, Residential life, and Physical Plant.

The Eco-Reps Program launched a new [Green Room Certification Program](#) that aims to give recognition to students living a sustainable lifestyle on campus. There are three levels that increase in difficulty and points.

More information at <http://www.champlain.edu/Sustain-Champlain/Sustainable-Culture/Eco-Reps-Program.html>

Next steps:

With a successful pilot year of the Eco-Reps Program, we will be expanding the program to include 12 student Eco-Reps next year, including one who will take on a leadership role.

Events

Over the year many events were held, most of which were hosted as a collaborative effort with other departments/programs, including:

- Environmental Club Documentary Film Series, Spring semester
- Environmental Policy Speaker Series, Spring semester
- Screening of 'Bloom', September 2011
- Participated in the Student Activities Fair, September 2011
- Sustain Champlain was a Scavenger Hunt location for C.H.A.D. Students
- Trash Bash waste sort, October 2011
- Common Ground: Current Issues in Energy, February 2012
- Screening of 'Bag It', March 2012
- Fair Trade Recycling with Robin Ingenthron, March 2012
- LEED Platinum Award Unveiling Ceremony for Roger H. Perry Hall, March 2012
- Recycling Facility Field Trip to the Green Mountain Compost Facility, November 2011, and the MRF, November 2011 & April 2012
- Career panel for environmental jobs, hosted by Environmental Policy Program, April 2012
- Annual Move-Out Collection for residence halls, April/May 2010 (co-hosted by Res Life)
- Off-campus Spring Move Out Project, hosted by City of Burlington, CSWD, UVM, Champlain, ReSTORE, May 23 (on Loomis Street and Bradley Street in downtown Burlington)

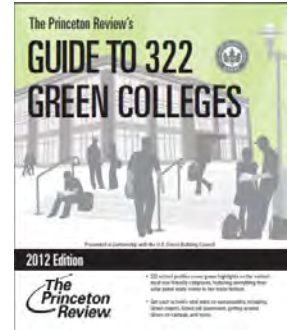


In the News

Various Sustain Champlain projects and events were noted on the [Champlain College news website](#) and *The Current*.

Awards

- Champlain College received an Honorable Mention for [Way to Go Week](#) in Spring 2011 and attended the ceremony in October 2011.
- [2012 Governor's Award for Environmental Excellence](#)
- Listed in the [2012 Princeton Review's Guide to 322 Green Colleges](#)



Collaborations

Collaboration with on-campus groups included:

- Worked with Mike Fife on incorporating sustainability concepts into the LEAD “Budgeting for Life” workshop
- Met with the Transportation Committee to work on the Champlain College Transportation Plan
 - Engaged in a discussion with Burlington Gas about the potential for having compressed natural gas vehicles on campus
- Met with the Events Center to discuss general ideas and specifics about areas of campus sustainability that are relevant to their department

Collaboration with off-campus groups included:

- Burlington Legacy Project committee member
- Representative for the Burlington Walk/Bike Council
- Technical Advisor for the co-curricular section of the Association for the Advancement of Sustainability in Higher Education’s Sustainability Tracking, Assessment, and Rating System (AASHE STARS)
- Intersection Action with Local Motion
- Vermont Campus Sustainability Network (VCSN)
- Green Revolving Fund Symposium hosted by Efficiency Vermont and the Sustainable Endowments Institute
- Provided information about large scale composting at Champlain College to the Vermont Legislature regarding a waste-related bill in the House in this year’s session.

Presentations/Trainings

Outreach presentations on campus included:

- Orientation Leaders (recycling)
- New student Orientation packets included stainless steel water bottle & *Go Green Guide to Living Sustainably at Champlain College*
- RAs (Recycling, Kill-A-Watt Challenge)

- Environmental Policy class “Intro to Environmental Issues” (general Sustain Champlain)
- Sustainability and Social Responsibility in the Curriculum, co-hosted with Lindsey Godwin (BUS), Valerie Esposito (EHS), and Kristin Wolf (Core)

Off-campus:

- Perry Hall presentation at the Boston Build Conference (November 2011)
- Christina Erickson authored a new, step-by-step guide to creating student peer-to-peer sustainability education programs—often known as “Eco-Rep” programs—on college campuses called “[Student Sustainability Educators: A Guide to Creating and Maintaining an Eco-Rep Program on Your Campus](#)” and facilitated a free webinar, titled [Eco-Reps - Student Sustainability Educators](#) (April 2012)
- Christina Erickson participated in an Eco-Reps presentation for the [Campus and University Recycling Coalition’s](#) (CURC) “Recycling Education and Awareness: Campus and Community Outreach” Webinar (May 2012)

Where do we go from here?

The Sustain Champlain initiative has come a long way in the past seven years when it began in 2005 as the Post Carbon Committee. Key areas up for discussion are:

- How to gather feedback on drafted Sustainability Action Plan and have it become an official document of the College.
- Reorganization/revitalization of Sustain Champlain Committee to possibly be split into two groups:
 - Sustain Champlain Advisory Board that meets 3-4/year to guide the work plan and oversee implementation of the Sustainability Action Plan
 - Employee Eco-Rep program with a series of monthly meetings focusing on a specific topic with suggestions for how to implement actions within department/building